

INSPI SV

SHOPAROUND ISLAND WITH HIGH PRODUCT VISIBILITY.

Inspi serves and displays it's best as a shoparound island or multiplexed when low shelving unit is needed.



THE SIGN OF COOL QUALITY

Caring for the future

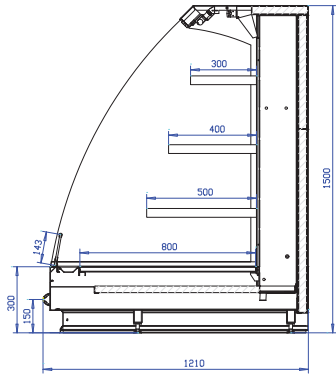
INSPI SV

VISION COLLECTION

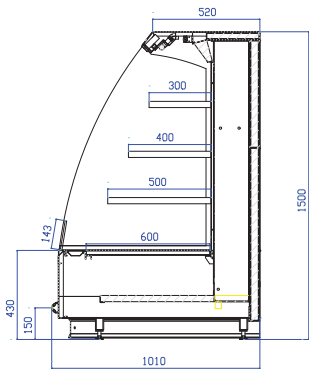
How to read the code:

SV30-121-150-250
 Front height Depth Height Length

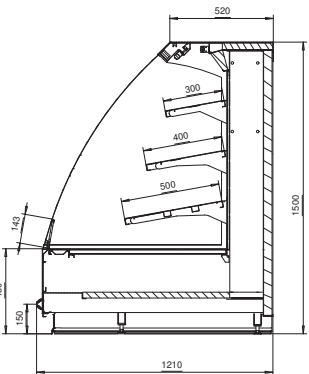
Measures are centimeters.



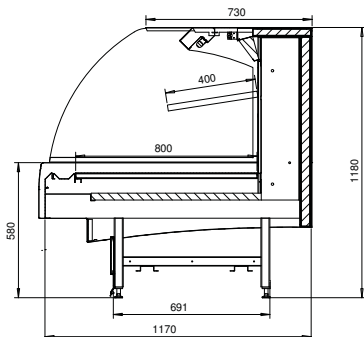
SV30-121-150 INSPI



SV43-101-150 INSPI



SV43-121-150 INSPI



SV58-117-118 INSPI

STANDARD FEATURES

- fan evaporator and expansion valves standard for R404A and CO₂ refrigerant
- fans
- defrosting rod
- defrost water connections for each unit, external diameter 40 mm
- thermometer
- overhead light fitting
- electricity switch box on the top of the cabinet
- full-length drainage kit
- standard cover plate Arc

TECHNICAL DATA

Front height	300, 430 mm					
Height	1180, 1500 mm					
Air Temperature	+0...+2 °C or +2...+4 °C	Min. power input W	¹⁾ Max power input W	Length	Depth	¹⁾ Refr. area m ²
SV30-101-150-125		370	478	1250	1007	2.3
SV30-101-150-188		758	938	1875	1007	3.4
SV30-101-150-250		970	1186	2500	1007	4.5
SV30-101-150-375		1442	1766	3750	1007	6.8
SV30-121-150-125		370	478	1250	1207	2.5
SV30-121-150-188		758	938	1875	1207	3.8
SV30-121-150-250		970	1186	2500	1207	5.0
SV30-121-150-375		1442	1766	3750	1207	7.5
SV30-101-150-192-E		763	943	1920	1007	3.5
SV30-101-150-212-E		758	938	2120	1007	3.8
SV30-101-150-232-E		914	1094	2320	1007	4.2
SV30-121-150-192-E		763	943	1920	1207	3.8
SV30-121-150-212-E		758	938	2120	1207	4.2
SV30-121-150-232-E		914	1094	2320	1207	4.6
SV43-101-150-125		370	478	1250	1007	2.3
SV43-101-150-188		758	938	1875	1007	3.4
SV43-101-150-250		970	1186	2500	1007	4.5
SV43-101-150-375		1442	1766	3750	1007	6.8
SV43-121-150-125		370	478	1250	1207	2.5
SV43-121-150-188		758	938	1875	1207	3.8
SV43-121-150-250		970	1186	2500	1207	5.0
SV43-121-150-375		1442	1550	3750	1207	4.1
SV58-117-118-125		370	406	1250	1170	1.5
SV58-117-118-188		758	818	1875	1170	2.3
SV58-117-118-250		970	1042	2500	1170	3.0
SV58-117-118-375		1442	1550	3750	1170	4.5
SV58-130-138-125		370	442	1250	1300	2.0
SV58-130-138-188		758	878	1875	1300	3.0
SV58-130-138-250		970	1114	2500	1300	4.0
SV58-130-138-375		1442	1658	3750	1300	6.0

¹⁾ SV30 three shelves, SV43 two shelves, SC58 one shelf.



Optional shelf lighting.



Ticket strip holder.



Cover plate Tree

OPTIONAL EQUIPMENT

- expansion valves for other refrigerants
- energy saving fans
- mirrored end panel
- partition end panel
- bumper trim for end panel
- shelf with console 300, 400 and 500 mm
- shelf lights
- corner cover
- holders, dividers etc.
- manual night curtains
- automatic control system
- extension kit
- ticket strip holder
- optional cover plate models Art Deco, Tree, Bead and Crystal or your own design